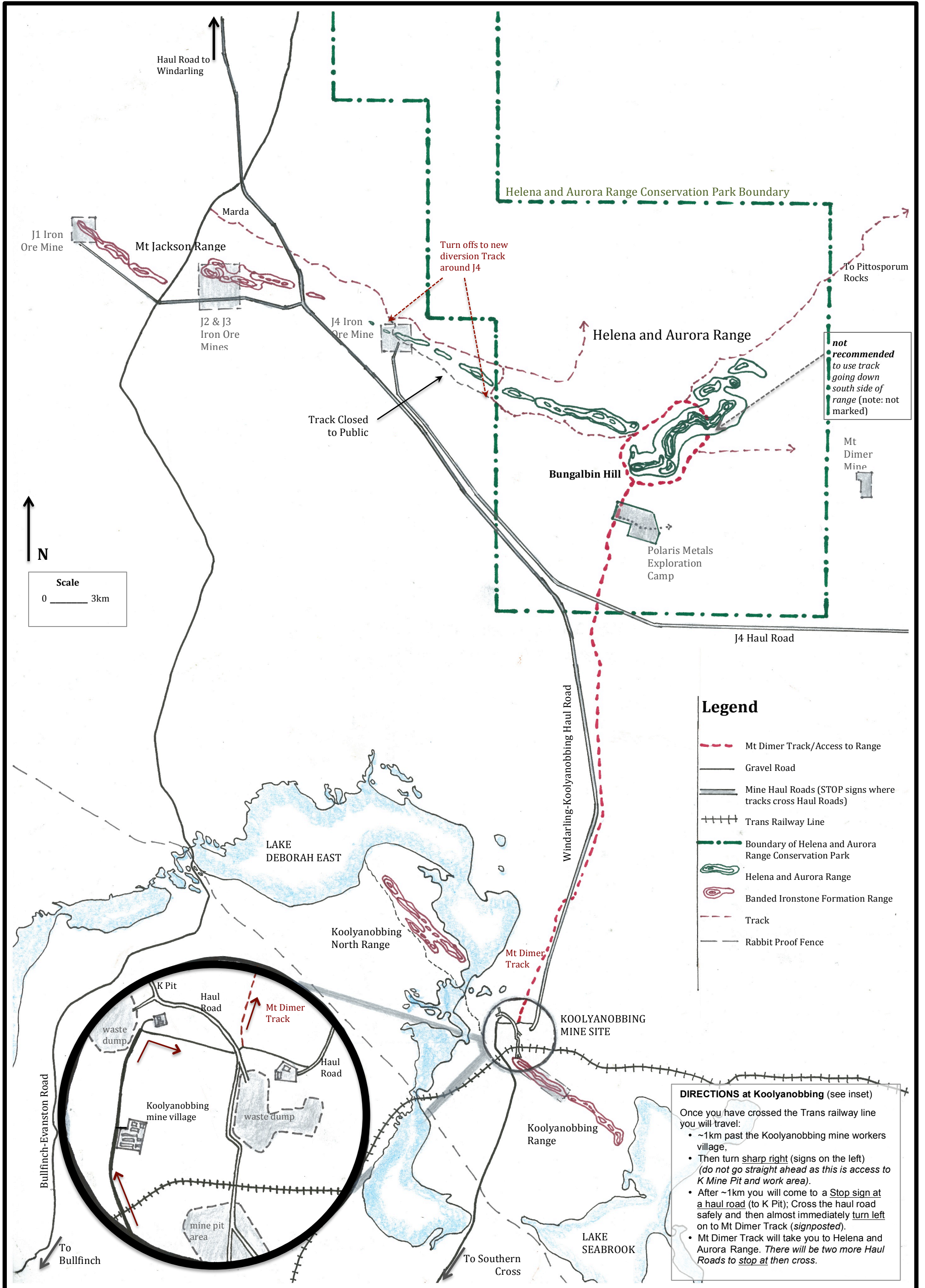


ACCESS MAP TO HELENA AND AURORA RANGE (BUNGALBIN) – NOVEMBER 2015



not recommended to use track going down south side of range (note: not marked)

Legend

- - - Mt Dimer Track/Access to Range
- Gravel Road
- = Mine Haul Roads (STOP signs where tracks cross Haul Roads)
- + + + Trans Railway Line
- · - · - Boundary of Helena and Aurora Range Conservation Park
- ~ Helena and Aurora Range
- ~ Banded Ironstone Formation Range
- - - Track
- - - Rabbit Proof Fence

DIRECTIONS at Kooyanobbing (see inset)
 Once you have crossed the Trans railway line you will travel:

- ~1km past the Kooyanobbing mine workers village,
- Then turn sharp right (signs on the left) (do not go straight ahead as this is access to K Mine Pit and work area).
- After ~1km you will come to a Stop sign at a haul road (to K Pit); Cross the haul road safely and then almost immediately turn left on to Mt Dimer Track (signposted).
- Mt Dimer Track will take you to Helena and Aurora Range. There will be two more Haul Roads to stop at then cross.